

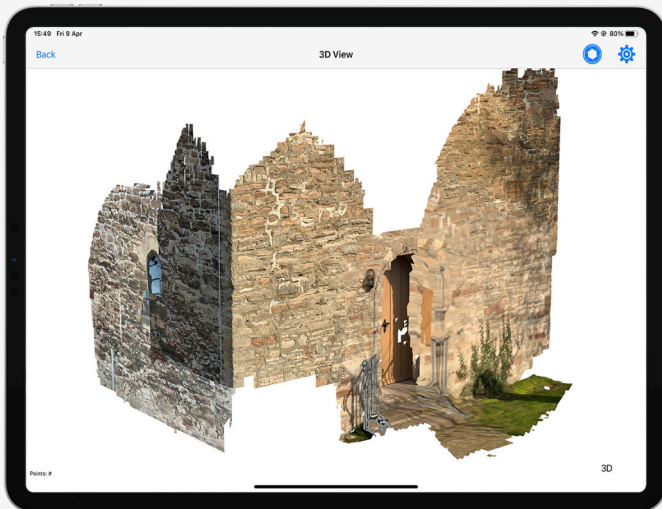
Turn your mobile device into a cm-precise surveying and 3D scanning tool. With tilt compensation.



GLRM Mapping Kit



GeoAce



ScanAce

GLRM

Multi-band RTK rover with tilt compensation

- All constellations & all frequencies
- Tilt compensation
- Jamming & spoofing proof
- Ultra compact and lightweight
- Rugged aluminium case
- Magnetically attached to the mobile device
- Wireless charging of the mobile device
- Best in class triple frequency high-gain antenna
- IP67, centimeter precise, fix in 2 seconds

A powerful combination of the General Laser GLRM RTK rover with a phone holder, in a rugged case, with the GIS Apps GeoAce and/or ScanAce from ITS Geo and an iPhone Pro or iPad Pro.

GeoAce

Visual Surveying on the Go

- Visual SLAM positioning and stakeout
- Data collection in Augmented Reality
- External GNSS and Apple Watch support
- Sketch & dimensions
- Can be used indoors, under trees, underground
- Import/Export: GeoJSON, PDF, CSV, SHP, DXF, DWG, DGN, Smallworld, OSM, GPX

ScanAce

3D Scanning and Model Generation

- 3D Scanner & Model Generator
- Georeferences scanned data
- Does not need external processing services or cloud connection
- Standard mode: 350.000 points/second
- Extreme high mode: 1.000.000 points/second
- Exports the RGB point cloud as E57
- Exports textured 3D-model as OBJ

Compatible with: iPad Pro 2020 or later, iPhone 12 Pro or later, iPhone 12 Pro Max or later.

Contact us

office@general-laser.at

general-laser.at

+43 1 890 2002